

Trombone

Concerto Grosso

I. Prelude and Fugue

Philip Seaton

Largo ♩ = 52

4

f

10

mp *fp*

16

f

20

Allegro ♩ = 102

20

p

44

Musical staff 44-48 in bass clef, key of B-flat major. It begins with a *mf* *leggiero* dynamic and a *crescendo* marking, ending with a *f* dynamic. The melody consists of eighth and sixteenth notes.

49

Musical staff 49-54 in bass clef, key of B-flat major. The melody continues with eighth and sixteenth notes, featuring some rests.

55

Musical staff 55-59 in bass clef, key of B-flat major. The melody continues with eighth and sixteenth notes.

60

Musical staff 60-64 in bass clef, key of B-flat major. The melody continues with eighth and sixteenth notes.

65

Musical staff 65-69 in bass clef, key of B-flat major. The melody continues with eighth and sixteenth notes.

70

Musical staff 70-78 in bass clef, key of B-flat major. It features a triplet of eighth notes marked *mf* and a change to 6/4 time signature at the end.

79

Musical staff 79-81 in bass clef, key of B-flat major, 6/4 time signature. It begins with a *f* dynamic and consists of quarter notes.

82

Musical staff 82-84 in bass clef, key of B-flat major, 6/4 time signature. The melody continues with quarter notes.

85

Musical staff 85-87 in bass clef, key of B-flat major, 6/4 time signature. It ends with a *ff* dynamic and a change to 4/4 time signature.

89



II. Berceuse

Andante ♩ = 66

96

24



128

28



III. Passacaglia

164 Allegro ♩ = 104

5 2 3

mp *mp* *mp*

178

mf

182

185

mf poco a poco cresc.

193

ff

201

8

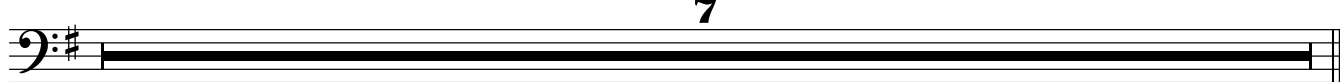
218

228

237



242



IV. Pastorale

249 Lento - Recitative

Andante ♩ = 60

3 17

p

Detailed description: This staff contains measures 249 to 273. It begins with rests in 5/4, 4/4, and 5/4 time signatures. At measure 274, the time signature changes to 4/4, followed by a triplet of eighth notes. At measure 275, the time signature changes to 3/4, followed by a triplet of eighth notes. The staff concludes with three quarter notes in 4/4 time, marked *p*.

274

6 soli

cresc. *mf*

Detailed description: This staff contains measures 274 to 286. It features a series of quarter notes with a *cresc.* (crescendo) hairpin. At measure 286, there is a six-measure rest marked *6* and *soli*. The staff ends with a quarter note marked *mf*.

287

solo

Detailed description: This staff contains measures 287 to 293. It begins with a quarter note, followed by an eighth note, and then a quarter note. A *solo* marking is placed above the music. The staff continues with quarter notes and rests.

294

19

mf *poco a poco cresc.*

Detailed description: This staff contains measures 294 to 319. It starts with a nine-measure rest marked *19*. The music then begins with a quarter note marked *mf*, followed by a series of quarter notes with a *poco a poco cresc.* (poco a poco crescendo) hairpin.

320

mf *f*

Detailed description: This staff contains measures 320 to 326. It features eighth notes with slurs, starting at *mf* and increasing to *f* by the end of the staff.

327

f

Detailed description: This staff contains measures 327 to 334. It begins with a quarter note marked *f*, followed by a series of quarter notes with a crescendo hairpin.

335

ff

Detailed description: This staff contains measures 335 to 338. It features a series of quarter notes with a crescendo hairpin, ending at *ff*.

339

6

p

Detailed description: This staff contains measures 339 to 345. It begins with a quarter note marked *p*, followed by a six-measure rest marked *6*. The staff ends with a double bar line.