

Trumpet in Bb

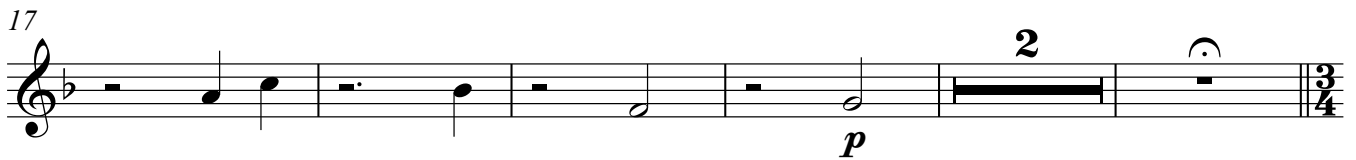
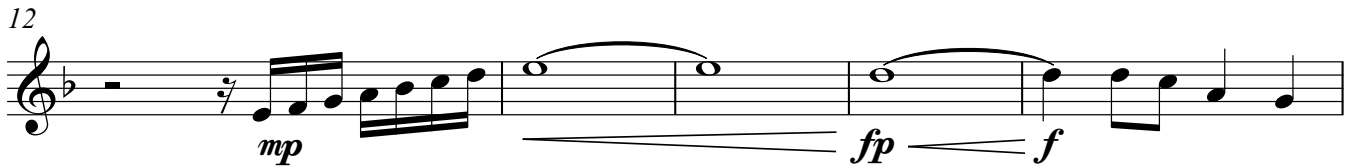
Concerto Grosso

I. Prelude and Fugue

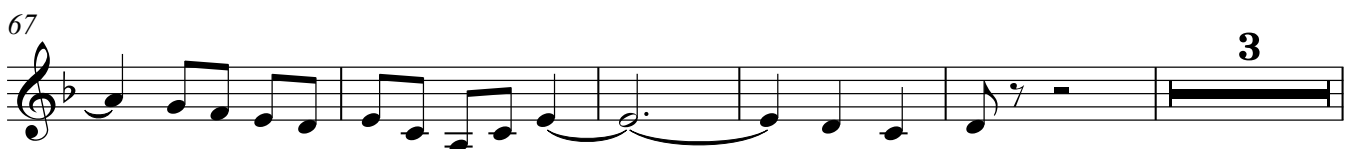
Philip Seaton

Largo ♩ = 52

6



Allegro ♩ = 102



75

mf *f*

80

84

ff

89

II. Berceuse

96

Andante ♩. = 66

32

f

132

28

III. Passacaglia

164 Allegro ♩ = 104

5

solo

mf

172

175

179

f

2

185

mf

poco a poco cresc.

193

ff

197

10

211



217



222



227



232



237



242



IV. Pastorale

249 Lento - Recitative Andante ♩ = 60

p

274

cresc. *mf*

314

poco a poco cresc. *mf*

322

f

329

più f

336

ff *p*